

## Weaving Futures: BSES Inaugurates Handloom Centre for Women's Empowerment

BSES has inaugurated its new Handloom Incubation Centre, 'Dhaga Vishwas Ka,' in Uttam Nagar, West Delhi, as part of its CSR initiative. This centre aims to empower underprivileged women and revive traditional handloom crafts. Following the success of the first centre in Sangam Vihar, this facility provides resources, training, and mentorship to over 80 women, equipping them to produce unique handloom products. The centre houses 15 handloom machines, 12 charkhas, a tana-bana machine, sewing machines, and more, fostering innovation in traditional weaving and sustainable practices.






It's Easy To Earn

## e-LECTRIC Reward Points



**100**  
Reward points  
for E-BILL  
subscription

**100**  
Reward points  
for Online payment  
(within 7 days of bill  
generation)

**50**  
Reward points  
for Online payment  
(within 8-15 days of  
bill generation)



Login to My Account on  
**bsesdelhi.com**



Go Digital - Get Rewarded  
BSES CUSTOMER LOYALTY PROGRAM

In collaboration with



Powered by  
thrive

### FEEDBACK

Send in your feedback to Corporate Communications, BSES Yamuna Power Limited.

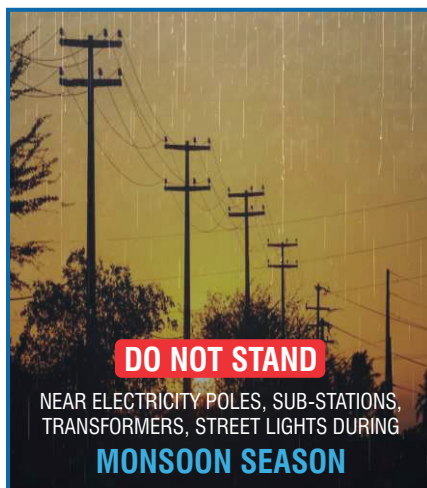
Registered Office: Shakti Kiran Building, Karkardooma, Delhi-110032,  
CIN:U40109DL2001PLC111525, Tel: 011- 4124-7111/4124-9273,  
E-mail: bypl.Feedback@relianceada.com, Website: www.bsesdelhi.com

## Stay Safe This Monsoon: Simple Tips to Prevent Electrical Hazards

The monsoons are here, bringing joy and cooler weather, but also increased risks of waterlogging and electrical mishaps. Follow these simple precautions to ensure a safe, incident-free monsoon season:

- **Avoid electrical installations:** Stay clear of poles, substations, transformers, and streetlights.
- **Keep children safe:** Warn them not to play near electrical installations, even if they are barricaded.

- **Dry hands first:** Never touch electrical appliances with wet hands.
- **Test before touching:** Use a tester if a switch or wall is wet. Call an electrician if you detect leakage.
- **Install an ELCB:** An Earth Leakage Circuit Breaker can help prevent shocks and accidents



Register 'No Supply' complaints through convenient options like Mobile App, Toll Free and Helpline Numbers



Toll Free 24x7  
19122



SMS  
5616108



Power theft related  
8588892156  
No Supply complaints  
8745999808



Streetlight  
41999808